

Related Products

Cytoskeleton Inc. is the leading supplier of purified small G-proteins, visit our web site or call for information on the small G-proteins currently available. These include the small G-protein Activation Assay Kits, and a variety of affinity reagents for small G-protein activation assays:

* Cdc42 GST protein: wild-type	Cat. # CDG01
* Cdc42 His protein: wild-type	Cat. # CD01
* H Ras GST protein: wild-type	Cat. # G21G01-C
* Rac1 GST protein: wild-type	Cat. # RCG02
* Rac1 His protein: wild type	Cat. # RC01
* Rac1 GST protein: constitutively active	Cat. # R61G01
* Rac1 GST protein: dominant negative	Cat. # R17G01
* RhoA GST protein: wild-type	Cat. # RHG02
* RhoA His protein: wild type	Cat. # RH01
* RhoA GST protein: constitutively active	Cat. # R63G01-A
* Raf-RBD beads	Cat. # RF02
* Ras Activation Assay Kit	Cat. # BK008
* EasyRad Phosphate Assay Kit	Cat. # BK055
* Rac Activation Assay Kit (pull-down)	Cat. # BK035
* Rac ELISA Activation Assay (G-LISA)	Cat. # BK125
* RhoA Activation Assay Kit (pull-down)	Cat. # BK036
* RhoA ELISA Activation Assay (G-LISA)	Cat. # BK124
* RhoGEF Exchange Assay Kit	Cat. # BK100



Cdc42 N17-GST Protein

Dominant Negative

Cat. # C17G01

Lot # 100

Amount: 1 x 25 ug

Store at 4°C (desiccated) or at -70°C

Material

The dominant negative form of the human Cdc42 protein has been produced in a bacterial expression system. This protein has a threonine to asparagine substitution at amino acid 17. The recombinant protein is tagged with GST (28 kDa) at its amino terminus. The approximate molecular weight of the Cdc42 N17-GST protein is 45 kDa. Cdc42 N17-GST is supplied as a white lyophilized powder.

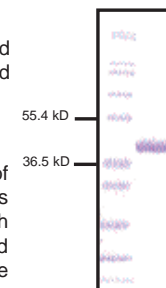
Storage and Reconstitution

Briefly centrifuge to collect the product at the bottom of the tube. The protein should be reconstituted to 1 mg/ml by the addition of 25 ul of distilled water. The protein will then be in the following buffer: 10 mM Tris pH 7.5, 10 mM NaCl, 0.3 mM MgCl₂, 1.0% sucrose, 0.2% dextran. In order to maintain high biological activity of the protein, it is strongly recommended that the protein solution be supplemented with DTT to 1 mM final concentration, aliquoted into experiment sized amounts, snap frozen in liquid nitrogen and stored at -70°C. The protein is stable for 6 months if stored at -70°C. The protein should not be exposed to repeated freeze-thaw cycles. The lyophilized protein is stable for 1 year if stored desiccated to <10% humidity at 4°C.

Purity

Protein purity is determined by scanning densitometry of Coomassie Blue stained protein on a 12% polyacrylamide gel. Cdc42 N17-GST protein was determined to be >90% pure (see Figure 1).

Figure 1. Cdc42 N17-GST Protein Purity Determination. A 10 ug sample of recombinant Cdc42 N17-GST protein (molecular weight approx. 45 kDa) was separated by electrophoresis in a 12% SDS-PAGE system and stained with Coomassie Blue. Protein quantitation was performed using the Precision Red Protein Assay Reagent (Cat. # ADV02). Mark12 molecular weight markers are from Invitrogen.



To Place Orders Tel: (303)-322-2254, Fax: (303)-322-2257, E-mail: cserve@cytoskeleton.com
For Technical Assistance E-mail: tservice@cytoskeleton.com. Cytoskeleton Inc. Denver, CO. USA.
WWW.CYTOSKELETON.COM page 4

To Place Orders Tel: (303)-322-2254, Fax: (303)-322-2257, E-mail: cserve@cytoskeleton.com
For Technical Assistance E-mail: tservice@cytoskeleton.com. Cytoskeleton Inc. Denver, CO. USA.
WWW.CYTOSKELETON.COM page 1

